

Back Faru

Located north east of Farukolhu Fushi on the outside reef, an hour sailing from Male'. The site is an easy dive and also good for snorkelers. The reef top is very shallow and slopes gradually into the ocean. Large coral blocks are scattered around in the reef and we often find nurse sharks resting beneath. Large tuna and other ocean going fish are commonly seen passing in the blue. Keep the reef on your left shoulder and swim back to the channel entrance. With an incoming current, white tip reef sharks can be seen patrolling here and often encounters blue marlin swimming, as well as barracuda and rays. Float into the channel and explore the overhangs and small caves. About 150 meters into the channel there is an interesting area with big parts broken off the reef with a lot of smaller fish and soft coral.

Banana Reef

"Banana Reef" is a very well known dive site in the Maldives - one of the first, one of the best and one of the more treacherous due to strong currents. On the eastern side of the banana-shaped reef, some rocks have broken away and created a perfect habitat for a surprising variety of schooling reef fish and large pelagic. Amongst the large overhangs resides an enormous school of blue-striped snappers. As you carry on along this banana-shaped dive, you will discover a pristine reef wall bursting with life, from different species of moray eels to fascinating corals and fish.

Banana Reef Basics: Pinnacle

Depth: 5- 40m

Visibility: 8 - 25m

Currents: Can be strong

Surface Conditions: Calm, but can be choppy

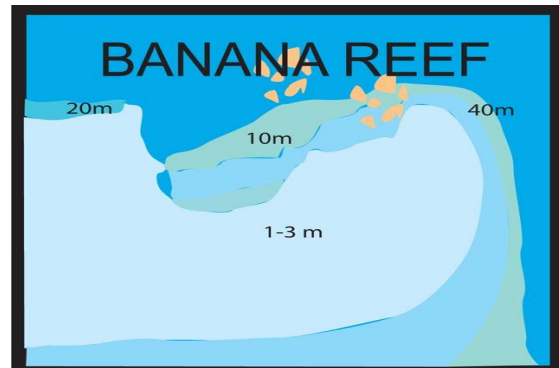
Water Temperature: 27 - 30°C

Experience Level: Beginners

Number of dive sites: 1

Diving Season: All year round

Distance: Depending on the resort



Bodu Hithi Thila (North Male)

Inside Hithi Kandu “Boduhithi Thila” is at a depth of 8 meters to 25 meters. You can experience the best diving on the southern end with a long drift dive. There are three bays in the reef with sandy bottoms between 15 and 25 meters and the reef top is eight to 10 meters. On one point of the bays there is a cave at 17 meters where you can see through. Sometimes you will find four to six nurse sharks inside the cave. There is plenty of light blue and soft yellow coral. Big schools of fusilier are found on the reef slopes along with the sweetlip, grouper and tuna. The turtles frequent the reef top all year around while manta rays are found between December and April. Because of its size this Thila is a favorite when the currents get strong. Hard coral cover is poor. White-tip reef sharks are found on the sandy bottom.

Boduhithi Thila Basics: Pinnacle

Depth: 8- 30m

Visibility: 15 - 25m depending on the time of the year

Currents: Can be strong

Surface Conditions: Normally calm, but can be choppy

Water Temperature: 27 - 30°C

Experience Level: Intermediate - advanced

Number of dive sites: 1

Diving Season: All year round

Distance: depending on the resort

Rasfari Corner (North Male)

The site known as “Rasfari” is located just outside Rasfari, which is an uninhabited island. Cutting across a wide outside reef you can find many sandy inlets and ridges. The white- tip and black-tip reef sharks rest on the sandy slopes. From the main reef you will see an offshore reef that is circular in shape with the top at a depth of 28 metres. This reef looks more like a Thila. The inside of the reef is at a depth of 30 meters while it drops off to well over 40 meters on the outside. You can view the deep-water pelagics at the top of the Thila excellently. Very often you are closely encountered with the grey reef sharks, schools of big-eye trevally, great barracuda and big schools of eagle rays. Sometimes if you are lucky oceanic white-tip sharks maybe seen. Around the full moon the oceanic triggerfish comes in for nesting on the deeper sandy slopes. You can see a variety of reef fish on the main reef and an interesting terrain of coral ridges and large schools of parrotfish. The coral growth is very good here. On the corner of Rasfari Kandu the strength of currents can increase rapidly so divers should take care of outgoing currents pushing them away from the reef. Remember to take your photographic equipment as you dive down into the waters of “Rasfari”. This site is a Protected Marine Area in the Maldives.

Rasfari Corner Basics: Chennel dive

Depth: 5- 30m

Visibility: 15 - 25m

Currents: Can be strong

Surface Conditions: Normally calm, but can be choppy

Water Temperature: 27 - 30°C

Experience Level: Intermediate - advanced

Number of dive sites: 1

Diving Season: All year round

Distance: Depending on the resort

Access: Liveaboards,Huvafen fushi,Reethi Rah,Boduhithi Island resort

Marine life: Reef sharks are a predominant feature here along with the resident Turtles and Napoleons. Dolphins can often be seen on the surface here.

Rasdhoor Madivaru (Rasdhoor)

Type of dive: Drift dive / Channel dive

Rasdhoor-Madivaru Corner is located in the corner of the channel into the atoll. Madivaru has its fame amongst seasoned divers of the Maldives. It has one of the most spectacular and confusing reef formations found in Ari Atoll. Hammerhead sharks emerge in big numbers just before sunrise swimming in large groups. Dolphins, dog tooth tunas along with schools of black snapper are seen at the reef edge during the early hours. Divers get an opportunity to view white tip reef sharks, pelagics, trevallies, little tunas, jacks, ribbon eels, fish leaves tunas, napoleon wrasse and barracudas.

Experience the thrilling scuba diving adventure amongst fine coral formations with highest underwater visibility.

Magiri thila Basics: Pinnacle

Depth: 10- 30m

Visibility: 15 - 25m

Currents: Can be strong

Surface Conditions: calm, but can be choppy

Water Temperature: 27 - 30°C

Experience Level: Advanced

Number of dive sites: 1

Diving Season: All year round

Distance: Depending on the resort



FISH HEAD

Fish Head also known as Shark Point or Mushimasingili Thila, fits the classic definition of a Thila, being a large isolated flat top reef rising sharply from the inner atoll floor at 40 to 50 meters to around 10 meters from the surface. It is one of the best sites for seeing sharks.

Featuring a series of caves and overhangs in between where you can see thousands of blue-line snappers against a backdrop of black coral bushes and large gorgonians. Spectacular view of grey reef sharks, big napoleon fishes and a wide variety of marine life combined with underwater scenery. At depth are caves featuring seafans and black coral bushes.

The local fisherman fished for sharks from this area because of the demand for shark oils and fins. Hence in 1995 the government declared Fish Head a 'Protected Marine Area' to ensure that it continues to cater for the expectations of divers and to avoid shark extinction

A must for all divers as this is one of the most famous dive spots in the Maldives.

Fish Head Basics: Pinnacle

Depth: 10- 30m

Visibility: 15 - 25m

Currents: Can be strong

Surface Conditions: Normally calm, but can be choppy

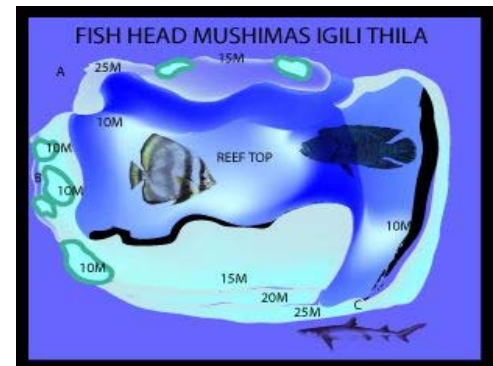
Water Temperature: 27 - 30°C

Experience Level: Advanced

Number of dive sites: 1

Diving Season: All year round

Distance: Depending on the resort



Maaya Thila night dive (North Ari)

Type of dive: Reef dive / Night dive

Mayaa Thila is among the well-known dive sites in Maldives located in North Ari Atoll, 3 km northwest side of Maayafushi Resort. Mayaa Thila comes under a list of saved Marine Area in Maldives. The external surface of the Thila is at 8 meters. Mayaa Thila has a biggest faithful of marine form like gray reef sharks, white tip sharks, frogfish, stonefish, batfish and zebra morays. The border of Mayaa Thila characterized by huge overhang extended with magnificent orange Tubastrea corals. Explore a rock in the figure of a big satellite on the edge of the Thila. Gray reef sharks hover in between the Thila and the huge satellite rock. Mayaa Thila in Maldives has a mean visibility of 20 meters and depth at 15 meters. A little satellite shaped rock on to the south of the Thila is an ideal destination for night scuba diving. Caves, crevices and overhangs are crossed with telling coral establishments. Triggerfish, angelfish, dogtooth tuna, fusilier, turtles, jacks and anglerfish saltation on the rhythm of water current will make diving safari attractive and delightful. With a diameter of 80 meters, the Maya Thila can be covered in one dive only while watching attractive number of white tip reef shark patrolling the reef.

Maya thila thila Basics: Pinnacle

Depth: 6- 28m

Visibility: 8 - 25m

Currents: Can be strong

Surface Conditions: Calm, but can be choppy

Water Temperature: 27 - 30°C

Experience Level: Beginners

Number of dive sites: 1

Diving Season: All year round

Distance: Depending on the resort



The large rocks on the north eastern side have large black coral trees growing on them. The best chance to get close to these creatures is at night time, when they are hunting. You will see sharks, barracudas, rays and eels trying to grab a morsel.

Hafsa Thila (Ari)

Hafsa Thila is located on the west of Maaya Fushi in Ari Atoll. The thila is a circular reef about 80 meters in diameter and can be easily covered in one dive depending on the current.

Plenty of overhangs, soft corals on the cliff faces, fusiliers, blue striped snappers and turtles are an attraction. When strong currents pass its possible to come across species like dog-tooth tuna, great barracudas, butterfly fish, grey reef sharks, clown triggerfish, moorish idol, parrotfish and clown triggerfish.

Hafsa thila Basics: Pinnacle

Depth: 10- 30m

Visibility: 8 - 25m

Currents: Can be strong

Surface Conditions: Normally calm, but can be choppy

Water Temperature: 27 - 30°C

Experience Level: Advanced

Number of dive sites: 1

Diving Season: All year round

Distance: Depending on the resort



HIMENDHOO THILA

A big Thila in a channel, at the West Side of Ari Atoll. Large overhangs with colorful soft corals. Unbelievable swarms of wimp fish, Sweet Lip and big fish are found here. During the winter season from December to April it becomes a Manta point. This Thila is one of the best dives spots at the West Side.

Recommended for experienced divers due to strong current, sometimes.

DHONKALO

A dive site better known as Manta Ray Car Wash is located in the channel between Maalhos and Himendhoo. It rates as the top site for Manta rays in the Maldives.

Mantas are regularly seen during the north-east monsoon season at around 22-25meters. Mantas are filter feeders, feeding on planktons, fish larvae.

The Top of the Thila is from 10 – 14 meters sloping down to 25 meters sandy bottom.

RANGALI MADIVARU

Madi means “ray” in Dhivehi. In the northeast season this is a superb manta ray cleaning station. As with many good manta points, the reef slopes down gently from its top at 8m (25ft) to the atoll floor at 30m (100ft). Although there are many cleaning stations along this 1km reef, the area where the mantas are most active is midway along the northern side. A deep basin, almost 100m (110yd) across has formed in the coral, and, as the currents flow out of the atoll, the waters eddy in the basin. This attracts the mantas, which hover like great spaceships in the current. To the east of the basin the reef forms a wall which drops steeply down to the sand floor at 30m (100ft). At a depth of 25m (80ft) there is a large cave running along the reef for 200m (220yd).

Madivaru Manta point Basics: Reef

Depth: 5- 28m

Visibility: 8 - 25m

Currents: Can be strong

Surface Conditions: Normally calm, but can be choppy

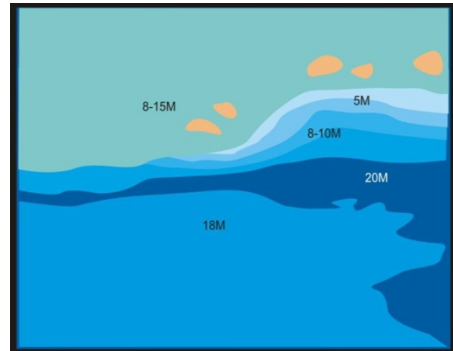
Water Temperature: 27 - 30°C

Experience Level: Beginners

Number of dive sites: 1

Diving Season: All year round

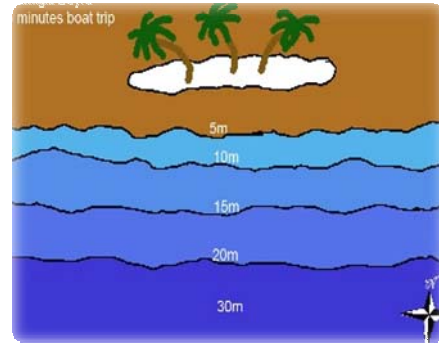
Distance: Depending on the resort



MAAMIGILI BEYRU

On the sloping outside reef of Maamigili this is an excellent site to observe pelagics and schooling fish. Enter the water just outside the local island Maamigili and head towards the channel entrance, dropping down close to where the wall meets a sandy slope at 30m.

This is the best area for pelagic encounters. Divers often find large schools of eagle rays or manta mobulas along with white tip reef sharks, tuna and barracuda. Near the channel entrance, look for the resident napoleonfish and schooling black and white snappers and jacks. The sloping reef features small coral heads with schooling oriental sweetlips swim and crevices and overhangs down to 15m where you can often find big moray eels and spiny lobsters.



This dive site shows to be the best place in Maldives to encounter the biggest fish in the world: the whale shark

Maamigili outside Basics: Outer reef

Depth: 10- 30m

Visibility: 10 - 25m

Currents: Can be strong

Surface Conditions: Normally calm, but can be choppy

Water Temperature: 27 - 30°C

Experience Level: Biggners

Number of dive sites: 1

Diving Season: All year round

Distance: Depending on the resort

Access: Liveboards, and the resorts near by

KUDA RAH THILA

Type of dive: Reef dive

The topography here is quite complex. The thila is divided into four large coral heads, of varying sizes, that sit on a plateau rising from 40m (130ft) to 12m (40ft). The thila is no more than 100m (110yd) in diameter, and you can swim around the whole site in a single dive. Each of the blocks is undercut from 15m (50ft) to 25m (80ft) with superb caves jammed full of soft corals, gorgonians and whip corals. On the southwest corner is an archway swim-through, and between all four pinnacles there are deep ravines that harbour a stunning amount of marine life. The centre of the thila is hollowed out, with a base at 20m (65ft), and thousands of blue-lined snapper school in the gullies that have been created. Watch out for yellow trumpetfish shadowing the snappers while hunting on the reef. Grey and whitetip sharks can be seen on the current points. This is a Protected Marine Area.

Kudarah Thila Basics: Pinnacle

Depth: 12- 28m

Visibility: 10 - 25m

Currents: Can be strong

Surface Conditions: calm, but can be choppy

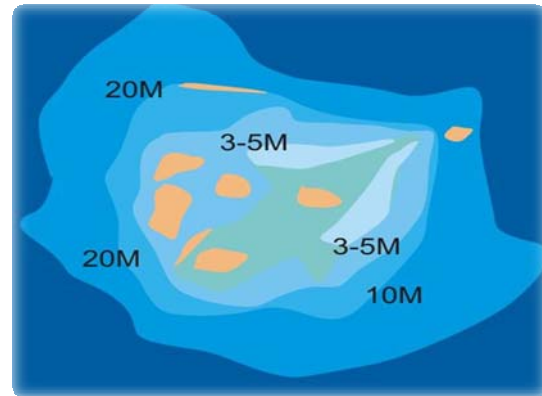
Water Temperature: 27 - 30°C

Experience Level: Intermediate

Number of dive sites: 1

Diving Season: All year round

Distance: Depending on the resort



Marine life: Grey Reef Sharks, Eagle Rays and schools of Big-eye Jacks.

Also Barracuda are often seen here.

One of the best dive sites for soft coral and fish life. The marine life here is so abundant, that the divers have named it 'fish soup'. The thila is in a circular shape and can be covered in a single dive at different depths, if the current is not very strong.

MAHCHAFUSHI WRECK

Machafushi wreck was sunk in 1988 for diving purposes and supports a great variety of marine life. The wreck sits upright only a short swim from the reef which slopes gently from 2 to 25m. Its keel lies at 28m and its deck at 12m.

Near the stern you'll find the crew quarters and wheelhouse, where oriental sweet lips and blue lined snappers took over from amid ship to the bow. A variety of encrusting sponges, leather and tubastrea corals and a few small soft corals have since taken hold on the wreck. It is also home to several large moray eels, groupers and reef fishes.

Some very colourful nudibranches can often be found as well.

Kudhima Wreck Basics: Wreck dive

Depth: 12- 30m

Visibility: 10 - 25m

Currents: Can be strong

Surface Conditions: Normally calm, but can be choppy

Water Temperature: 27 - 30°C

Experience Level: Intermediate - advanced

Number of dive sites: 1

Diving Season: All year round

Distance: Depending on the resort

Access: Liveboards,

COCO CORNER

The north side of Biyaadhoo Kandu has many caves and overhangs near the corner between 5 to 20 meters. The channel wall is steep – at one point it is quite deep, descending to 40 meters. Inside the channel 200 meters from the corner, is a large outcrop of reef 20 meters long in depth of 30 meters. Turtles frequent the reef, as well as surgeon fish and black snappers. At Cocoa Corner you can find reef sharks, rays and napoleons and you are very likely to spot a sleeping leopard shark in the sand.

Depth: 5-40m

Currents: Can be very strong

Type of Dive: Drift dive

Surface Conditions: Normally calm, but can be choppy

Water Temperature: 27 - 30°C

Experience Level: Intermediate - advanced

Number of dive sites: 1

Diving Season: All year round

KANDOOMA THILA

Type of dive: Drift dive / reef dive

Diving Hints and Currents: Shaped like a teardrop, **Kandooma Thila** is one of the most spectacular dives in the South Male Atoll, for scenery as well as for prolific fish life. Subjected to strong currents, a quick descend is necessary at **Kandooma Thila**. The dive begins at the up-current and dive guides usually set the jumping point a few meters away from the reef. Be prepared to make an open water safety stop and to use a surface balloon, which should be deployed as soon as divers reach shallower water and while making the safety stop. Keep the balloon visible on the surface at all times until the dive boat locates the divers.

Dive Site: Kandooma Thila

Type of Dive Site: Thila (Pinnacle)

Location: South Male Atoll

Best Time to Dive: All year round

GPS Position: 03.54445, 07.28622

Depth Range: 14m – 30m

Coral Growth: Excellent in hard coral, soft coral and sponges

Features: Caves, overhangs and coral heads

Fish Life: Abundant

Experience Level: Advanced

Located in a channel, the reef is subject to strong currents at times. The ocean currents carry lot of nutrients to the reef, supporting an abundance of sea life.

The site is well renowned for the soft coral growth, turtles, diverse fish life and invertebrates found on the reef. At the reef slope you may find sharks and eagle rays.

GURAIIDHOO CORNER

Diving Hints and Currents:

Guraidhoo Kandu, also known as Guraidhoo Corner, is famous for its notorious incoming current. It is well known for spotting Gray Reef Sharks, Eagle Rays and Pelagic species. The dive at **Guraidhoo Kandu** begins at the outer reef close to the channel corner and divers swim towards the corner during an incoming current. Once at the corner, divers can use the current to hook on a coral and observe the entrance of the channel. When the current is flowing into the channel, Grey Reef Sharks patrol the edge of the entrance and other pelagic action can be observed on the ocean drop-off. Divers should remember to stay close to the reef once they leave the corner. During strong currents, underwater turbulence can be experienced within the channel near the caves and coral blocks. If divers are pushed away from the reef at **Guraidhoo Kandu** toward the deep blue water, do not try and fight against the current. Instead, they should drift with the current, try ascending to shallower waters and deploy the surface balloon. The balloon should remain visible on the surface until the dive boat has located the diver.

Dive Site: Guraidhoo Kandu (Protected Marine Area)

Type of Dive Site: Channel

Location: South Male' Atoll, South corner of Guraidhoo Kandu

Best Time to Dive: North East Monsoon season when currents are inflowing

GPS Position: 03.35270, 072.43150

Depth Range: 5m – 30m

Coral Growth: Poor

Features: Caves, Overhangs

Fish Life: Abundant

Experience Level: Suitable for beginners when the current is not strong, but when currents are strong, the dive is strictly only suitable for experienced divers that can handle underwater turbulence and washing machine-like conditions.

KANDOOMA CAVES

The Kandooma Caves are some of the best and biggest caves in the Maldives and great to dive.

Depth: 5-40m (16-13ft)

some of the underwater marvels of the Maldives are the huge Kandooma Caves on the reef corner near Kandooma Island. They are among the largest caverns to be found in the tourist atolls. Just 50 meters from the corner are two huge caves close to one another, one is at 20 meters with a hole in the roof at 10 meters; the other is at a depth of 16 meters. The 16 meter cave is about 70 meters long and has curly overhang blocking out much of the light inside. Inside are yellow sponges, sea fans and small tube corals and very often giant morays.

There are many groupers and squirrel fish to be found in the caves and along the reef such as clown triggerfish, napoleon, sweetlips, angelfish and –most impressive – the big green turtles. Kandooma Caves has to be in every divers logbook.